

TECHNICAL SPECIFICATIONS

IoT ULD Cube

Model No. MR 815

Smart ULD Tracking

IoT ULD Cube is a low-maintenance and durable wireless data logger designed for ULD containers. With real-time tracking, minimal infrastructure requirements, and seamless global operability, it ensures continuous visibility across your fleet for years.

Key Features

- Asset Tracking**
 Milestone-based asset tracking ensures efficient management of the ULD fleet. The loggers are easy to install and offer an impressive runtime of up to 4 years.
- Global Operability:**
 Utilizes the ISM 2.4GHz band for seamless operation worldwide without state-specific licensing requirements.
- Optimized ULD fleet management**
 Integrate seamlessly with SkyMind software, leveraging advanced tracking technology.
- Live Location Tracking:**
 Real-time tracking via LoRa or BLE connectivity, enabling enhanced visibility and accurate decision-making.



Temperature Sensor

Measurement Range	-40°C to +75°C
Accuracy	±0.2°C > 0°C, ±0.3°C < 0°C

Mechanical Specification

Weight	20g
Dimensions	217 x 19.5 x 7.2 mm

Operating Specification

Mount	Holder is required to mount in to the container
Operating Temperature Range	-40°C to +75°C
User Interface	1x RGB LED 1x Push button
Battery Life	4 years (default configuration)

Wireless Communication

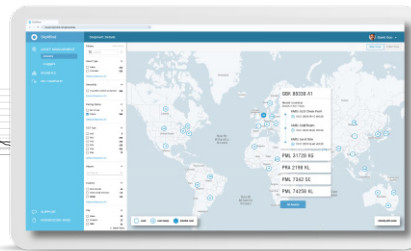
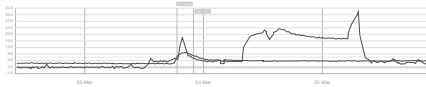
Transmission Interval	1h moving, 6h stationary (accelerometer-based detection of movement)
Connectivity	Fully automated readout via SkyCell gateway network or via IoT X Connect
Wireless Communication Standards	LoRa, BLE
Frequency Band	2.4 GHz global ISM band 2.4 to 2.48 GHz
RF Transmission Power	Max. 12.5 dBm / 17.8 mW TX power



TECHNICAL SPECIFICATIONS

IoT ULD Cube

Model No. MR 815



Approval

Airline Approval

Approved by major airlines as cargo tracking device complies with EASA, AMC1 CAT.GEN.MPA.140, 2019

Conformity

CE, FCC

EU Directives

2014/30/EU Electromagnetic Compatibility (EMC)
 2014/53/EU Radio Equipment Directive (RED)
 2014/45/EU Low Voltage Directive (LVD)
 2015/863/EU on the Restriction of Hazardous Substance (RoHS3)

FCC ID

2A2SN-SKYCELL810

Standards

EN 301 489-1 V2.2.3 (EMC)
 EN 301 489-17 V3.2.4 (EMC)
 EN 300 328 V2.2.2 (Radio)
 EN 62368-1:2014+A11:2017 (Electrical Safety)
 EN 50663:2017 (RF Exposure)
 EN 63000:2018 (RoHS)
 FCC Part 15 C : 15.203 (Radio)
 FCC Part 15 C : 15.205 (Radio)
 FCC Part 15 C : 15.207 (EMC)
 FCC Part 15 C : 15.209 (EMC)
 FCC Part 15 C : 15.247 (Radio)
 47 CFR Part 2.1091 (RF Exposure)
 RTCA DO-160, Section 21, Category H (RF radiated emissions)
 UN38.3 (Battery)
 UL 1642 (Battery)



PAIRING STATUS
 SEPT 28 10:05
**PAIRED TO
 CONTAINER**



Connect IoT ULD Cube with various assets and loggers for unified tracking and smarter supply chain management.



Contact us today
uld.tracking@skycell.ch